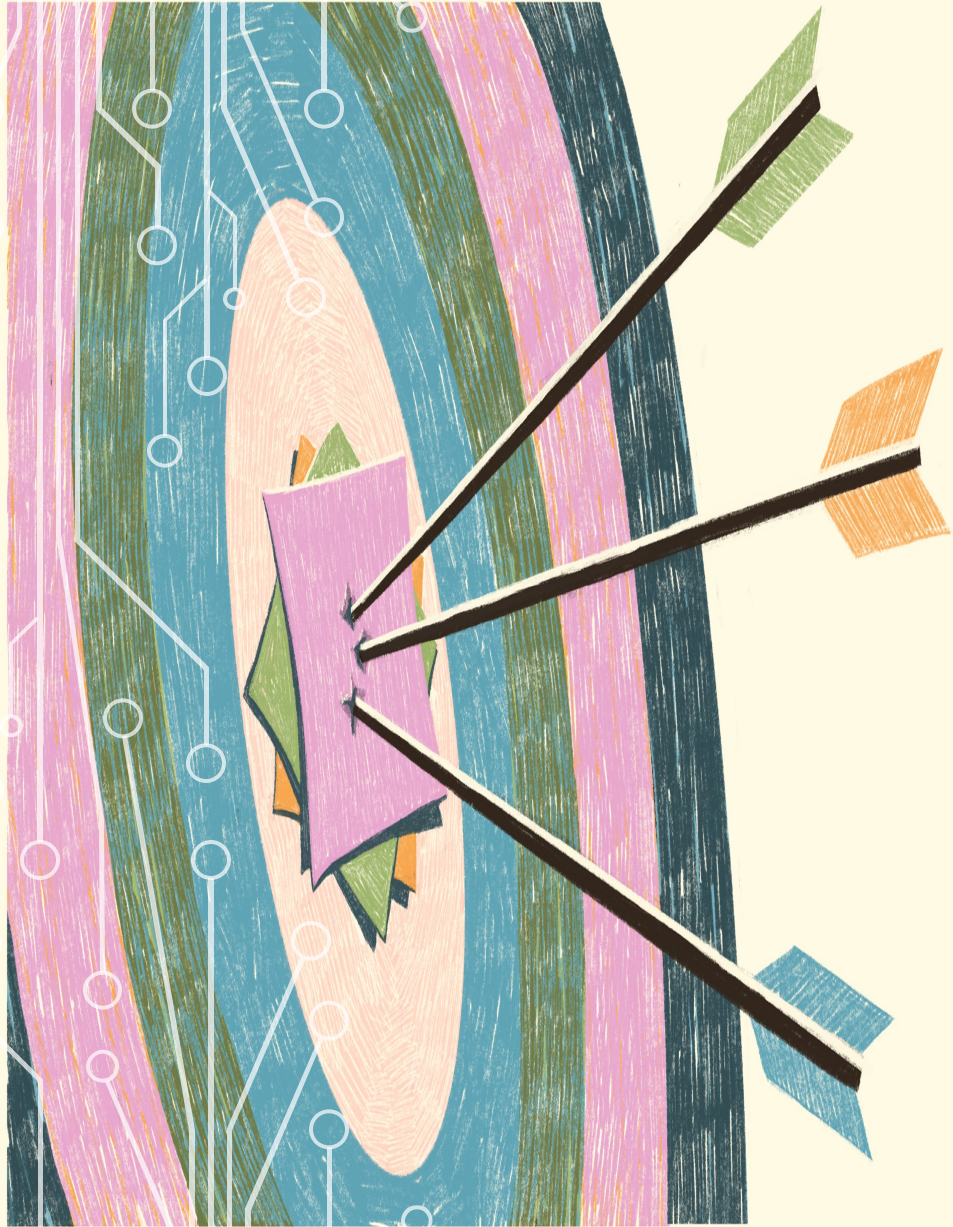


USA FIELD HOCKEY
INDOOR SEASON
2023/2024
UMPIRE GUIDE

MODIFIED FOR JPH





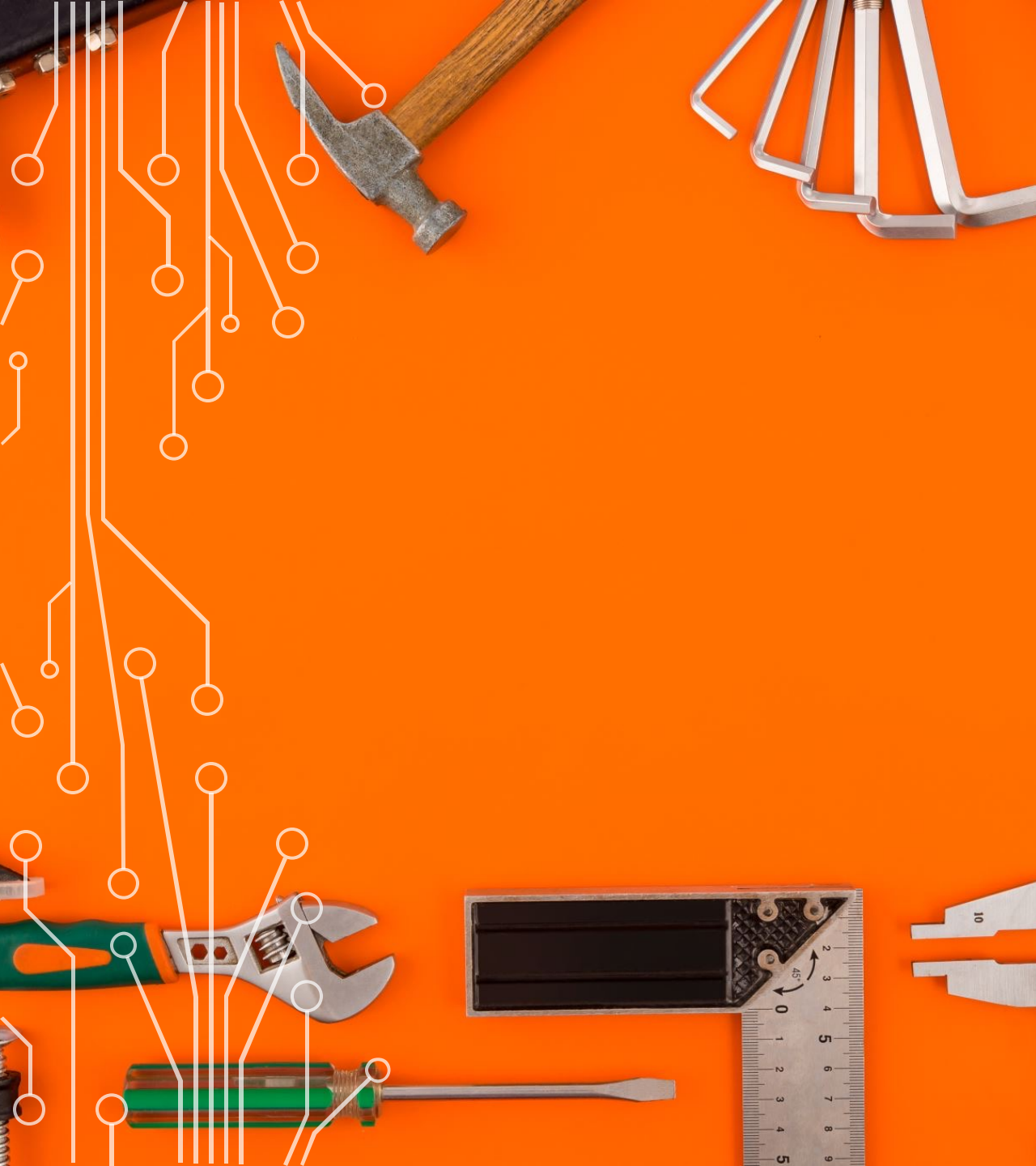
AREAS OF PARTICULAR FOCUS

COMMUNICATION

* WHISTLE TONE AND TIMING – WHAT IS YOUR WHISTLE SAYING?

* CLEAR SIGNALS - START WITH THE OUTCOME, THEN THE REASON

*RADIOS ARE NOT YOUR ONLY TOOL



TOOLS

- Whistle
- Verbal
- Signals
- Body Language
- Facial Expressions
- Radios

SAFETY

* DRILLING!

PLAYING THE BALL DELIBERATELY AND HARD INTO AN OPPONENT'S STICK, FEET OR HANDS WITH ASSOCIATED RISK OF INJURY WHEN A PLAYER IS IN A 'SET' OR STATIONARY POSITION; AND PLAYERS COLLECTING, TURNING AND TRYING TO PLAY THE BALL DELIBERATELY THROUGH A DEFENDING PLAYER WHO IS EITHER CLOSE TO THE PLAYER IN POSSESSION OR IS TRYING TO PLAY THE BALL ARE BOTH **DANGEROUS ACTIONS** AND SHOULD BE DEALT WITH UNDER THIS RULE. A PERSONAL PENALTY MAY ALSO BE AWARDED TO OFFENDING PLAYERS.

REMOVING PC EQUIPMENT

- *Field players should remove their penalty corner equipment as soon as they are able to do so after the pc is completed.*
- *All players must remove all pc equipment before leaving their defending half of the field*
- *A free hit awarded to the defending team during a pc may be immediately passed by a defending player wearing protective equipment. They may not take a self-pass.*

RAISED BALLS

- *OTHER PLAYER/S WITHIN PLAYING DISTANCE?*
- *WAS ANY PLAYER ADVANTAGED OR DISADVANTAGED?*
- *BE CONSISTENT ACROSS THE PITCH*

PLAYING THE BALL IN THE AIR

- *STICK TO BALL?*



- *BALL TO STATIONARY STICK?*





GOOD
LUCK
AND
ENJOY! 😊